

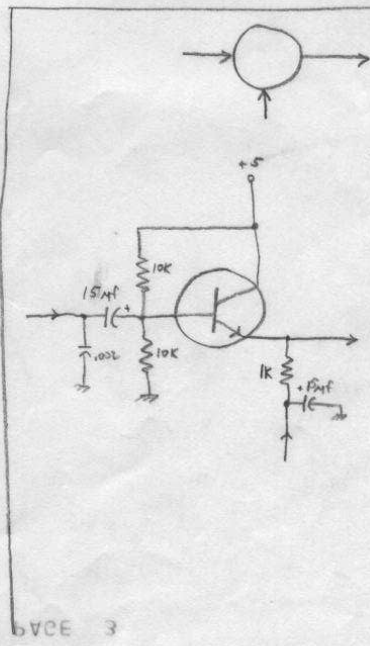
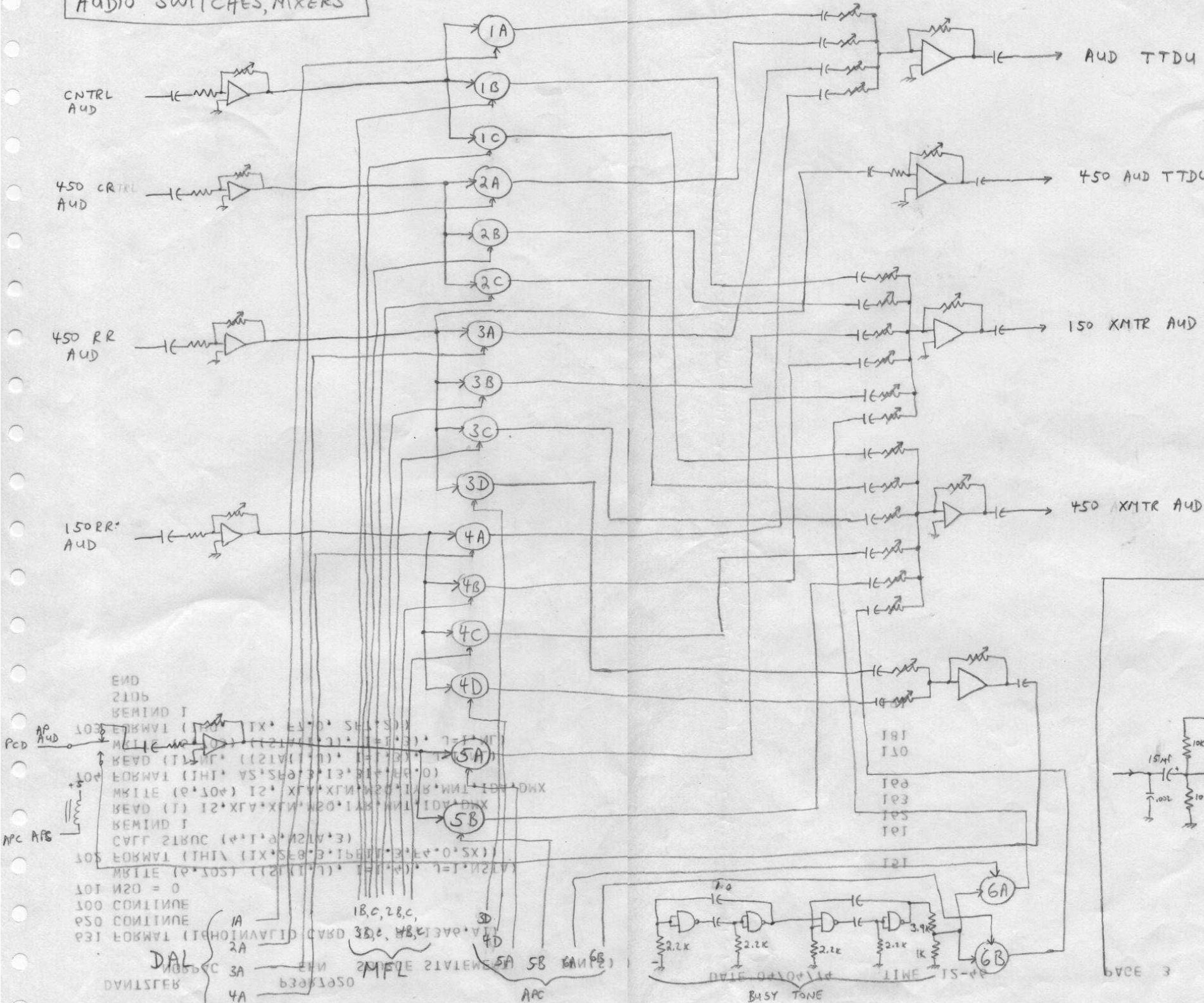
```

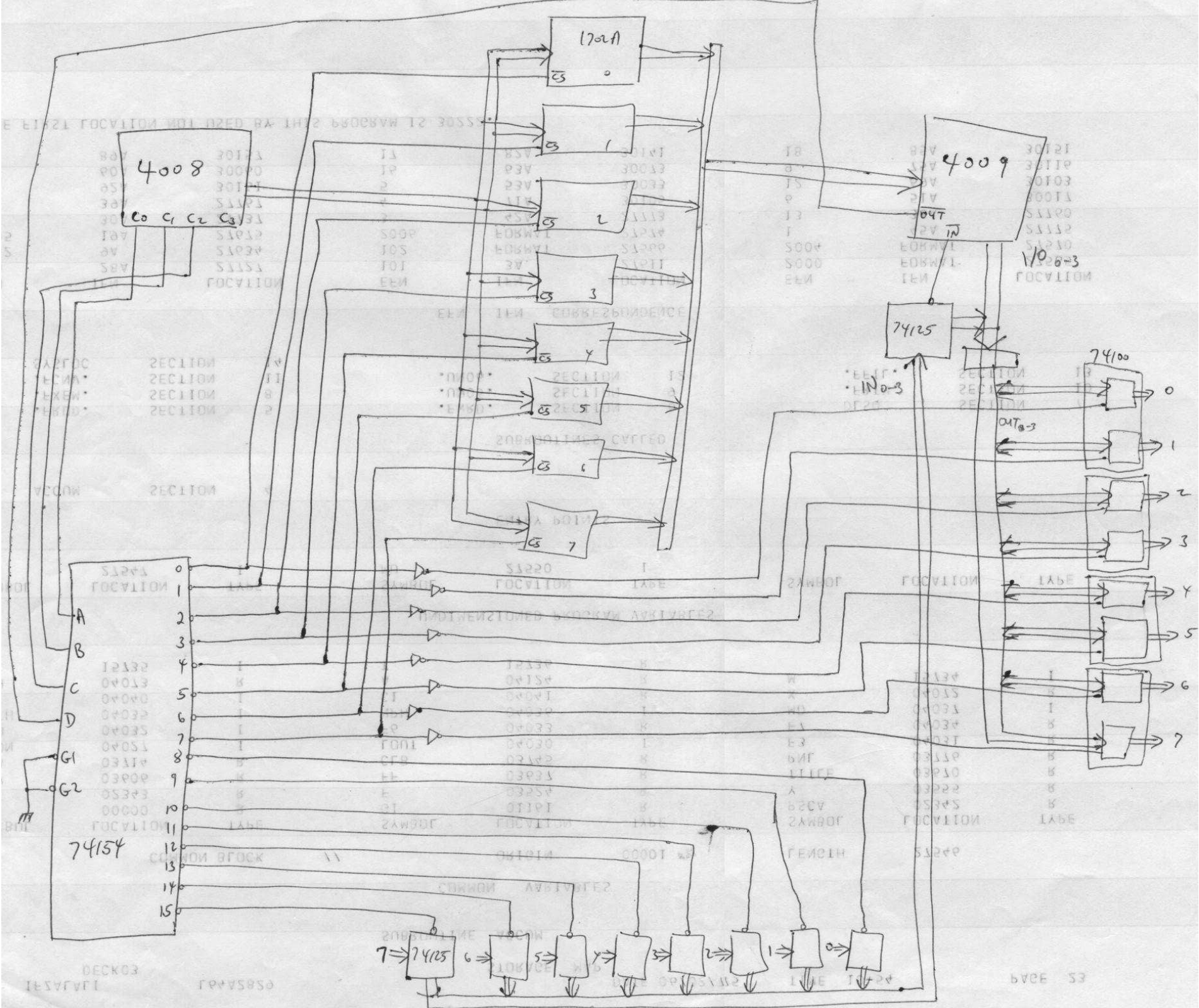
END
BELOWN
110 FORVAL (IX*(SX*V2*V0*SX))
MKIE (P*TO) ((FAB(I*7)*I=I*8)
100 FAB(W*7) = FAB(W*K)
DO 100 W=T*5
DO 100 T=J*8
31 *ZH2001H*QH EA21 * 2H FAB *PHNOB1H \
S ZHNC1B7*PH 2-M *ZHNC1B7*PH N-E *ZHNC1B7*PH 2-E *ZHNOB1H*PH EA2
I \ZH101A*QH RA21H *ZH2001 *PHH-N*E21 *ZHNC1B7*PH N-M *
DATA ((FAB(I*7)*I=I*8)*7=I*8)
DIFFERENTIAL FAB(S*8) * FAB(S*8)

```

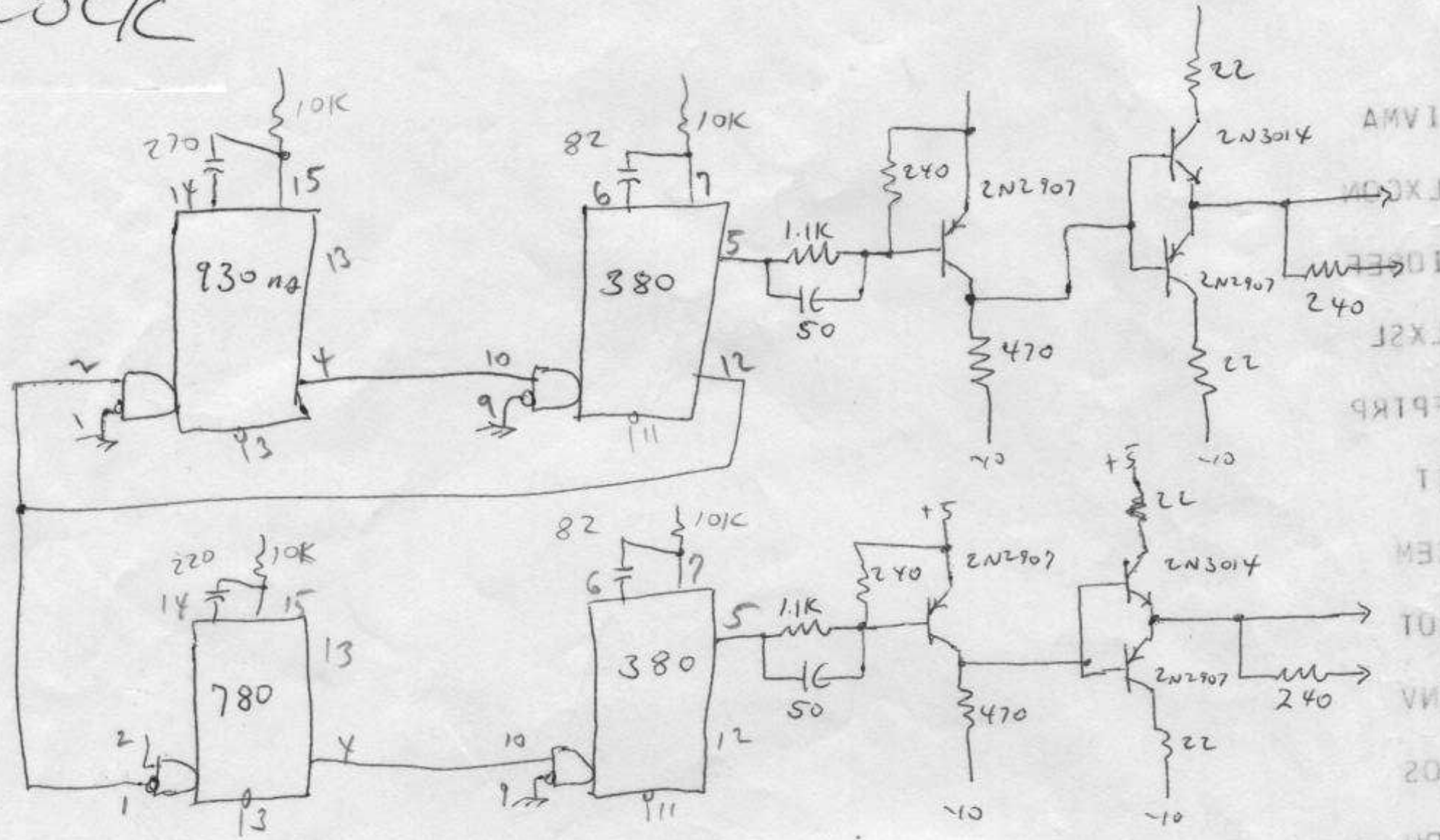
REPEATERS CONTROL SYSTEM

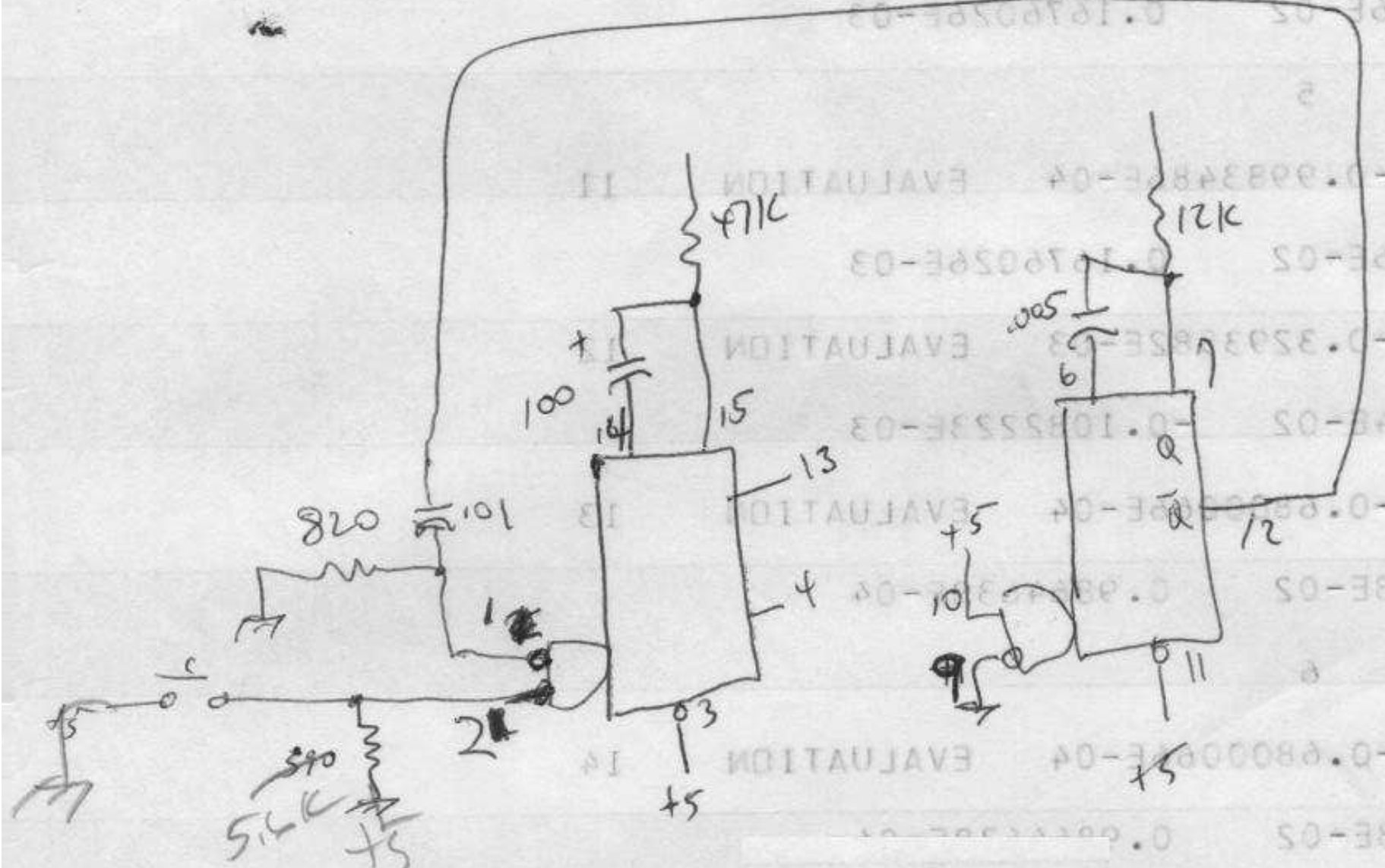
AUDIO SWITCHES, MIXERS





CLOCK



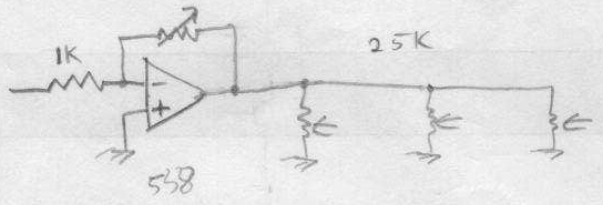


RESET

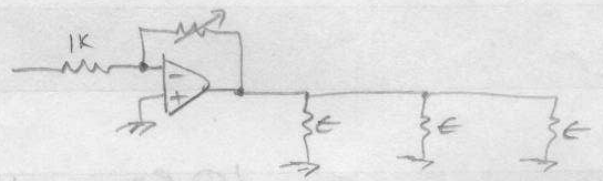
- 3
- 4
- 5
- 9
- 13

1

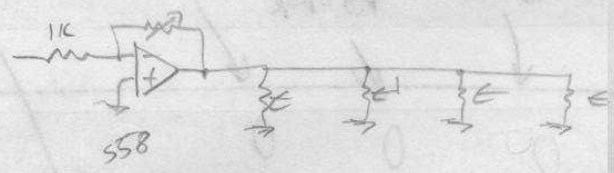
PHONE



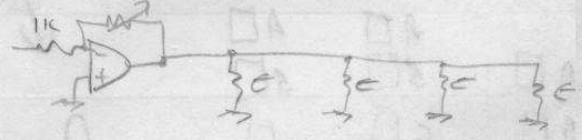
450 CR



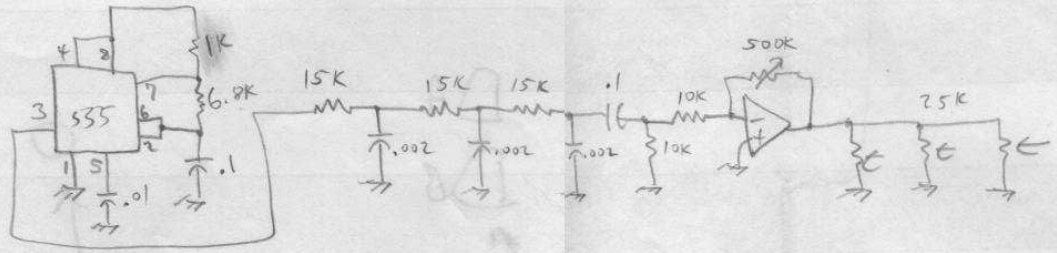
450 RR



15 RR

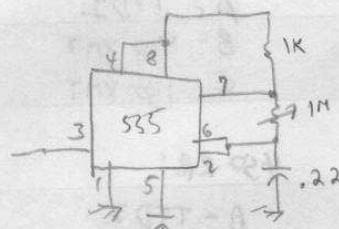
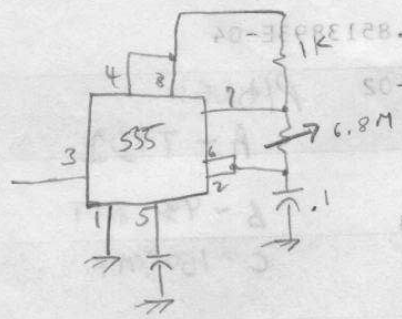
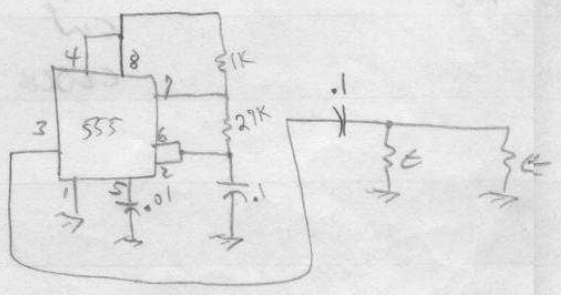


1KHz



BT

250 Hz



INPUT BUFFERS

$$R = 1K$$

$$C = \frac{1}{1700(110)} = \frac{1000}{1.75(1K)} = \frac{1}{1.75} = .57$$

$$(25K)(1000)(10^{-6})$$

$$\frac{1}{\omega C} = \frac{10^6}{1700(.5)} = \frac{10^6}{850}$$

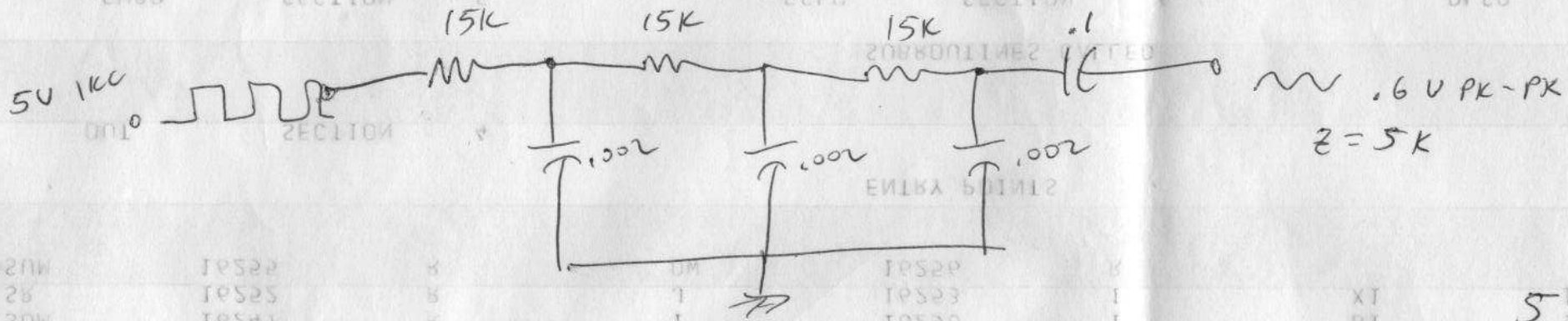
CC*3
E*4
E*1C
95.100
2081
EMBD

CC*4
CC*T
E*5
*E*11
ETC
*E*210*

.05

50 x 10⁻⁶

CC*5
E*3
*E*31A
*EXEM*50
DF20



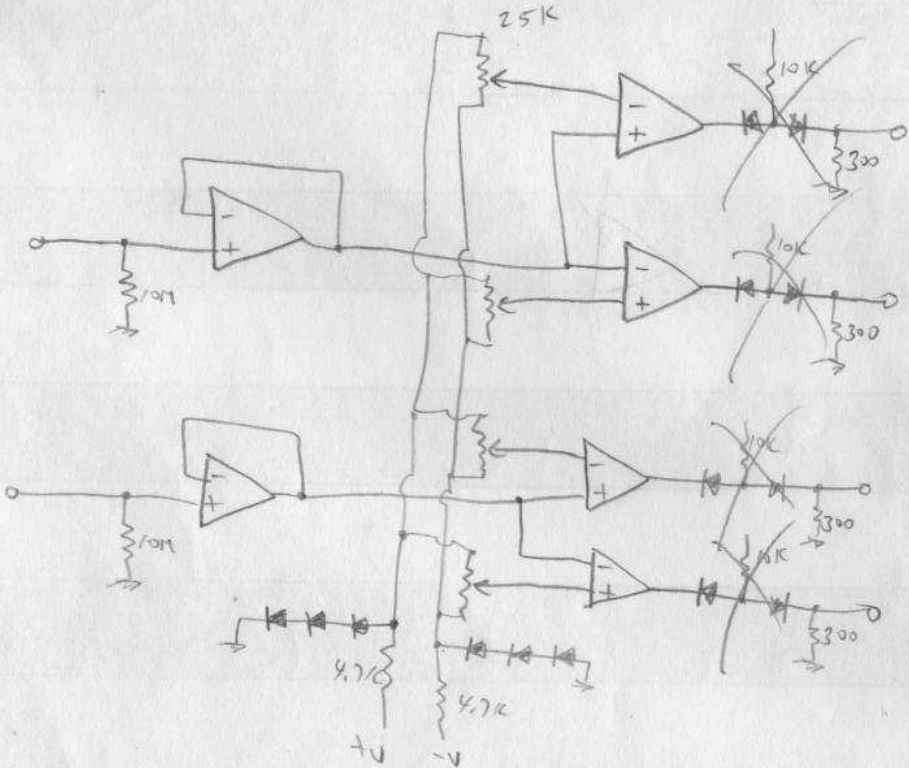
9

3

SYMBOL	LOCATION	TYPE	SYMBOL	LOCATION	TYPE	SYMBOL	LOCATION
20W	10522	4	10529	8	1	XT	10524
26	10525	8	10533	1	1	BT	10521
20W	10523	8	10520	1	1	BT	10521
AWBOG	LOCATION	TYPE	AWBOG	LOCATION	TYPE	AWBOG	LOCATION

DIMENSIONED PROGRAM VARIABLES

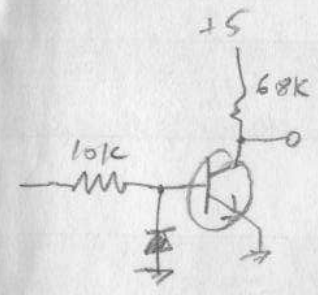
558



538

538

HI/LO



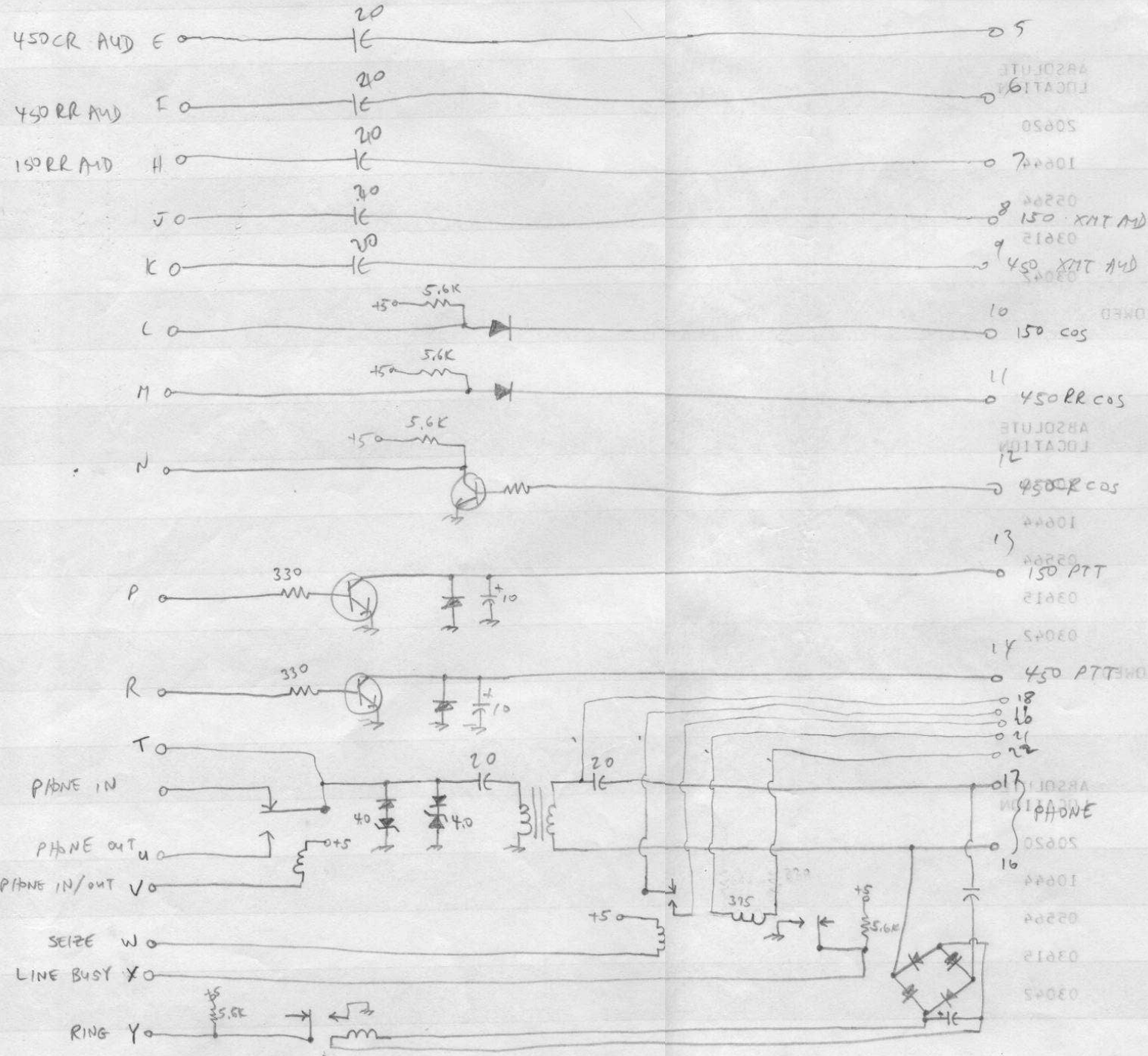
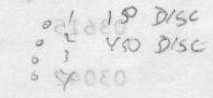
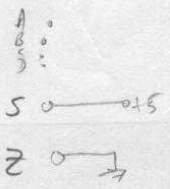
ABSOLUTE LOCATION	HEX OR LINE NO.
02804	4A
03012	68
03045	8

ABSOLUTE LOCATION	HEX OR LINE NO.
52850	20
10844	8
02804	4A
03012	68
03045	8

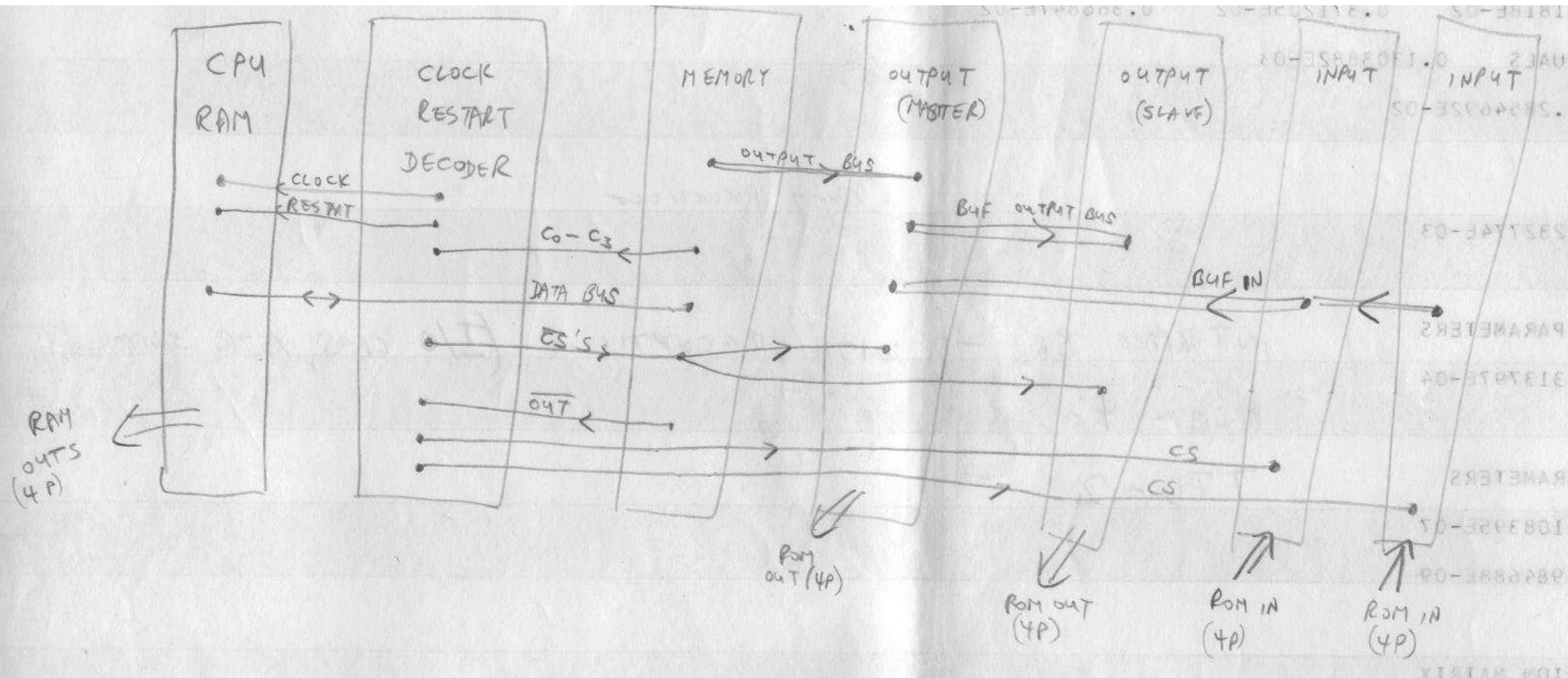
ABSOLUTE LOCATION	HEX OR LINE NO.
50850	20
10844	8
02804	4A
03012	68
03045	8

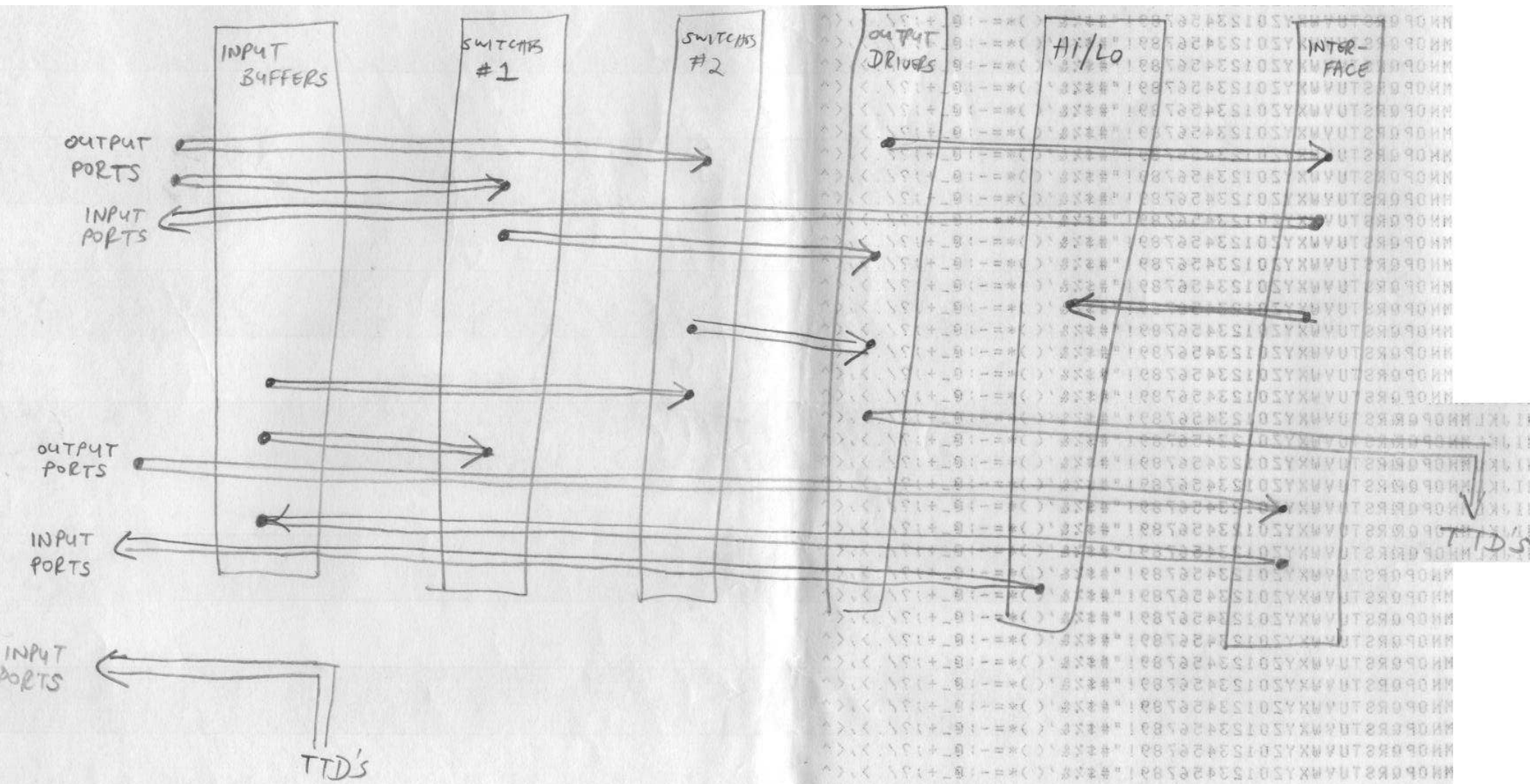
○ 150 LO
 ○ 150 HI
 ○ 450 LO
 ○ 450 HI

INTERFACE BOARD



MCS4-1B





		<u>FUNCTION</u>	<u>TENT. CODE</u>
-	18	RESET	*30*
RS	1	150 RPT OFF	*10*
RS	2	450 RPT OFF	*40*
RS	3	LINKUP 150/450	*39*
RS	4	DISABLE TONE ACCESS FROM 150	*11*
RS	5	" " " " 450	*41*
RS-MS	23	450 CNTRL TO 150 RPT ON (5 sec after drop)	*12*
RS-MS	24	" " " 450 " " "	*42*
RS	12	WIRE LINE TO 150 RPT ON	*13*
RS	13	" " " 450 " "	*43*
RS	14	AUXILIARY 150 XMTR ENABLE	*14*
MS	25	150 ID	*15*
MS	26	450 ID	*45*
RS	6	SELECT RX #1	*51*
RS	7	" " 2	*52*
RS	8	" " 3	*53*
RS	9	" " 4	*54*
RS	10	" " 5	*55*
RS	11	" " 6	*56*
RS	15	SPARE 1 ENABLE	*61*
RS	16	" 2 "	*62*
RS	17	" 3 "	*63*
MS	22	ACCEPT CNTRL CODE FROM 150 (5 sec)	#11*
-	27	150 PATCH	*16*
-	28	150 KNOCKDOWN	*17*
-	19	PATCH	#9
-	20	KNOCKDOWN	##
MS	21	DISABLE BLOCKING (10 sec)	#0